

# Auckland *explorer* Bus



## Information Sheet

**SAVE WITH  
COMBOS &  
ATTRACTION  
DISCOUNTS!**

See back page



### BUSES STOP

**DECEMBER 01 - MARCH 31**

every 15 minutes

**APRIL 01 - APRIL 30:**

every 20 minutes

**MAY 01 - NOVEMBER 30:**

every 30 minutes





## Red Tour

First bus departs: 9am last bus returns: 5pm



### Viaduct Harbour/Princes Wharf

Our main stop at the entrance to Viaduct Harbour is the closest stop to the Princes Wharf and Queens Wharf cruise ship terminals. This waterfront area was developed to host America's Cup regattas in 2000 and 2003. Stroll past super yachts from around the world and enjoy views of the Auckland Harbour Bridge, explore our rich maritime history at the New Zealand Maritime Museum, or enjoy world class hospitality at the many bars and restaurants that line the water's edge. An easy walk away, over the Te Wero Bridge, is the newly regenerated Wynyard Quarter and Silo Park precinct. Here you'll find the Auckland Fish Market, as well as many more waterfront eateries and bars and a fantastic playground for children.

First bus 9am, last bus at 4pm, terminating at 5pm



### Bastion Point lookout

Bastion Point offers breathtaking views over the city and Waitematā Harbour, as well as the tranquil Michael Joseph Savage Memorial Gardens. A path leads down the hill to Mission Bay, where you'll find a beautiful beach and a range of places to eat. Please note this path is fairly steep, so allow time for the return walk, or you can walk back around the waterfront (approx. 30 mins) to rejoin the bus at Kelly Tarlton's (Stop 3).

First bus 9.10am, last bus 4.10pm



### Kelly Tarlton's

Discover New Zealand's rich marine environment, including sharks, stingrays, seahorses and other sea creatures. Journey through the underwater viewing tunnel, the first of its kind in the world, and get up close to New Zealand's only colony of king and gentoo penguins in the Antarctic Ice Adventure. Allow 1-2 hours for your visit. Please note the exit is at the other end of the carpark from our stop, so allow extra time to return to the bus.

First bus 9.15am, last bus 4.15pm



### Parnell Rose Gardens

Enjoy a riot of colour and scent in these beautiful gardens, which showcase more than 5,000 new and old rose varieties. The annual Parnell Festival of Roses is held here every November. To enjoy the blooms at their fullest, visit in the summer months between October and April. A pathway at the back of the park leads downhill to Judges Bay and the historic Parnell Baths, a salt water swimming pool complex open during the summer months.

First bus 9.20am, last bus 4.20pm



### Holy Trinity Cathedral

Situated at the top of Parnell Village, the cathedral is Auckland's principal Anglican church, as well as a venue for music and cultural performances. The cathedral precinct consists of the impressive Holy Trinity Cathedral, famed for its 'Pacific Gothic' architectural style and unique stained glass windows, and the historic cathedral church of St Mary. Visitors are welcome and entry is free.

First bus 9.25am, last 4.25pm



### Parnell Village

New Zealand's oldest suburb, Parnell is famed for its art galleries, cafés, restaurants and charming boutique stores housed in historic villas. Enjoy wandering along the street and winding your way through the intriguing cobblestone alleys. There are many New Zealand-made treasures to be found here, from designer jewellery and clothing to gifts, paintings and sculptures.

First bus 9.35am, last bus 4.35pm



### Queen Street/Civic Theatre

The heritage Civic Theatre sits on the corner of Queen Street, Auckland's main street, and Wellesley Street. Spend some time shopping along Queen Street or cross diagonally at the traffic lights for the Auckland Art Gallery and beautiful Albert Park. The gallery is an award-winning building containing New Zealand's largest art collection, with more than 15,000 artworks.

First bus 9.40am, last bus 4.40pm



### Sky City & Sky Tower

At 328 metres (1076 feet) high, the Sky Tower is the tallest man-made structure in New Zealand and the southern hemisphere. Travel in glass-fronted lifts to one of three viewing platforms for breathtaking views in every direction. If you're looking for thrills, you can walk around the outside, or even jump off the tower! The SkyCity complex also hosts a casino, two hotels and over 25 restaurants, bars and cafés, with free wifi inside.

First bus 9.45am, last bus 4.45pm

## Blue Tour

First bus departs: 9.30am last bus returns: 4.30pm



### Auckland Museum

The Auckland War Memorial Museum is a must-see for all visitors to Auckland. Three expansive levels tell New Zealand's story, from our emergence as a nation through the loss and suffering of war, to our unique natural history and our fascinating Māori and Pacific treasures. Māori cultural performances take place at 11am, 12 noon and 1.30pm daily, with a 2.30pm show in peak summer. The foyer area has free wifi, a café and toilets, and is available to everyone. The beautiful Wintergardens (Stop 11) are a short distance from the museum.

First bus 9.30am, last Blue Tour bus 3.30pm, last Red Tour bus 4.30pm



### Wintergardens

Just a short walk across the Domain from the museum, the Domain Wintergardens are a beautiful historic garden complex. Large ornate greenhouses contain temperate and tropical plants from around the world, including some rare and exotic species. Entry is free. There is a café close by, and the duck ponds are also worth a visit.

First bus 9.35am, last bus 3.35pm



### Eden Garden

Described as Auckland's best-kept garden secret, Eden Garden was established in 1964, when a group of volunteers began transforming an abandoned quarry on the slopes of Mt Eden. Today, this garden paradise features two spectacular hectares of native and exotic plants, including one of the largest collections of camellias in the Southern Hemisphere. A café is open daily.

First bus 9.45am, last bus 3.45pm



### Mt Eden/Maungawhau

Maungawhau or Mt Eden is one of Auckland's most famous natural landmarks and a public park. As the highest volcano on the Auckland isthmus, it provides stunning views over the city and the Waitemata Harbour. You can walk the 300 metre path to the summit from our bus stop. Be aware a reasonable degree of fitness is required and there is no shelter on the mountain.

First bus 9.50am, last bus 3.50pm



### Eden Park (drive past only - no stop)

Eden Park is New Zealand's largest stadium, seating up to sixty thousand people. It is home of the world champion All Blacks rugby team and the Black Caps, our national cricket team. In 1987 the first ever Rugby World Cup final (which New Zealand won) was held here. More recently it was the venue of many matches in the 2011 Rugby World Cup, when we won it for a second time. Eden Park was also a venue for the 2015 Cricket World Cup. Statues around the outside of the grounds commemorate some famous All Blacks.

As a courtesy to other passengers  
please don't talk over the commentary,  
and for your safety when boarding,  
be seated quickly and stay seated while  
the bus is moving, thank you.

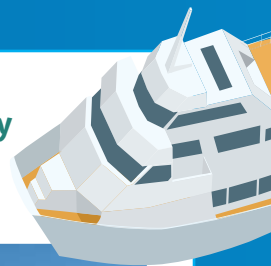
Have a good day!

Blue Tour Stops 15 - 17 on back page

# Blue Tour

First bus departs: 9.30am last bus returns: 4.30pm

Take the ferry over to...



Stop  
15

## Westfield St Lukes

With over 180 stores, St Lukes is one of New Zealand's largest shopping malls, and the perfect place for a little retail therapy. Stores include department stores and boutiques, a supermarket, food court, cafés and an eight-screen cinema complex. There are also banks and a foreign exchange service if you need to change your money.

**First bus 10.00am, last bus 4.00pm**



Stop  
16

## Auckland Zoo

Auckland Zoo is home to the largest collection of native and exotic animals in New Zealand. Meet 138 different species and over 875 animals as you explore 17 hectares of lush parkland. See New Zealand's national icon, the kiwi bird, as well as elephants, lions and tigers, apes, giraffes and more.

**First bus 10.10am, last bus 4.10pm**



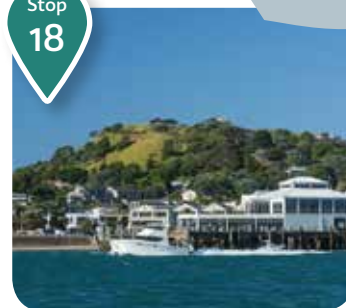
Stop  
17

## MOTAT

The Museum of Transport and Technology or MOTAT is New Zealand's largest museum of its kind. Within 40 acres, MOTAT will take you on an interactive journey through many of the technological achievements that have shaped New Zealand, including an impressive aviation hall.

**First bus 10.15am, last bus 4.15pm**

Stop  
18



## Devonport

Your Explorer Bus pass\* includes a free return trip to Devonport! Jump on a ferry from the downtown terminal and cross the harbour to this historic suburb.

Browse boutique shops for unique gifts, indulge at a restaurant, café or bar, relax on the beach or climb North Head for harbour views.

Tickets valid for sailings between 9:00am - 4:30pm, Monday - Friday, and all weekend sailings.

Journey time: approx. 12mins.  
Ferries depart every 15-30mins.

Visit [www.fullers.co.nz](http://www.fullers.co.nz) for timetable details.

*\*excludes 1 hour passes*



## Bonus Discounts

Show your Auckland Explorer Bus pass and receive great discounts at these attractions. Or talk to your driver about upgrading to a combo pass for even more savings!

### Viaduct Harbour Attractions:

- NZ Maritime Museum
- Auckland Adventure Jet
- Auckland Adventure Duck
- Degree Gastrobar

### SkyCity Attractions:

- Sky Tower
- Sky Tower gift shop
- Sky Tower SkyWalk
- Sky Tower SkyJump

### - Kelly Tarlton's

- Auckland Museum
- Eden Garden

### - Auckland Zoo

- MOTAT

## Useful Tips

To get the best value from your day pass, we recommend visiting the attractions as you come to them, rather than travelling the whole route first.

Cruise ship passengers: please remember to exit at Stop 1 for Princes Wharf and Queens Wharf

**You can recycle this sheet with the driver, or feel free to take it with you as a souvenir**

## How was your tour?

We'd love to hear about your Auckland Explorer Bus experience! Leave us a review, or share your photos with us using #aucklandexplorer



#aucklandexplorer

